

Studying Medicine, Dentistry or Veterinary Medicine in UK/Europe



Medical
Doorway



What we will discuss

Medical  Doorway

- Medical Doorway
- Studying Medicine in UK & Europe
 - Some considerations
- Choosing universities
 - Application and Selection procedures
- University options
- Transition to University
- Questions



The Medical Doorway Process

Medical  Doorway

1. Advice and counselling

- a. Listen to you
- b. Listen to your priorities
- c. Listen to your aspirations
- d. Discuss the opportunities and challenges
- e. Find the best fit
 - a. Not study medicine in Europe?
 - b. Draw up a list of universities
 - c. Assist in your decision
- f. Guide through the application & selection
- g. Assist successful arrival and enrolment



The Medical Doorway Process

Medical  Doorway

2. Selection & Acceptance

- a. Arrange application
- b. Entrance exams (for certain universities)
 - a. Ran in the UK, Hong Kong, Berlin & UAE
 - b. Help you prepare for these exams
- c. Arrange all necessary paperwork
 - a. Legalisation of required documents
 - b. Translation when required
- d. Secure the final enrolment documents



The Medical Doorway Process

Medical  Doorway

3. Pre-Departure and Transition

- a. Visa application
- b. Accommodation arranging
- c. Pre-Departure Support
- d. In country enrolment support



Medical Doorway

Studying Medicine in Europe

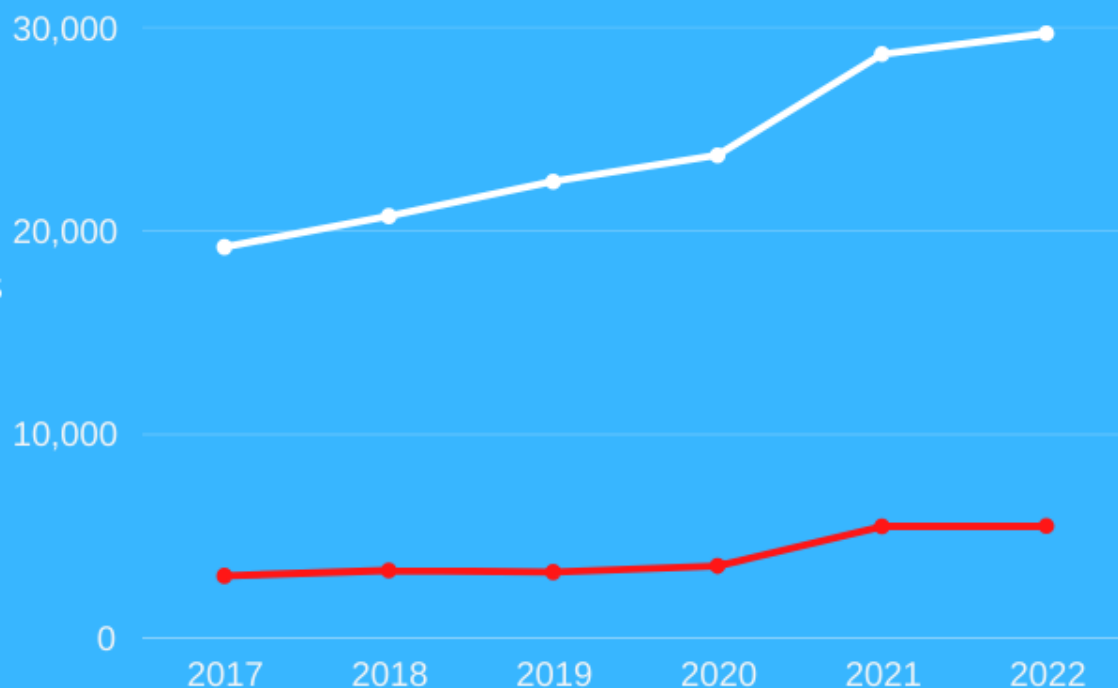
Facts & Figures

UK MEDICAL SCHOOL APPLICATION TRENDS

"UCAS data released on 28th October 2021 shows another increase in applications to UK medical schools for the 2022 enrolment.



Total applications for admission are now up 54% on 2017. For international fee-paying students the increase is 44% across the same period.

The increase in seats has not however kept up with this growth. It is more competitive than ever to secure a place to study medicine in the UK."



Benjamin Ambrose
(Managing Director, Medical Doorway 2021)



-  Total number of applications
-  International student applications

*Data received from UCAS 4th November 2021

Medical Doorway

Choosing the universities

Europe

A continent of diversity & opportunity

- Diversity of locations
 - Countries
 - Languages
 - Cities/towns
- Diversity of requirements
 - Design of programme
 - Subject combinations
 - Grade requirements
- Diversity of costs
 - Tuition fees
 - Living expenses
 - Scholarship opportunities (Limited)
- Diversity of selection systems
 - Application timelines
 - Exam and interview formats
 - Offer and acceptance system



What “lifestyle” do you want?

- Multiple country options
 - West, Central, East or Mediterranean
- 5 – 7 year commitment
- Capital city environment
 - Prague (Charles University)
- University town
 - Kosice (Pavol Jozef Safarik)
- Campus university
 - Milan – (Humanitas University)
- Island based
 - Gozo – (Queen Mary University of London Malta)

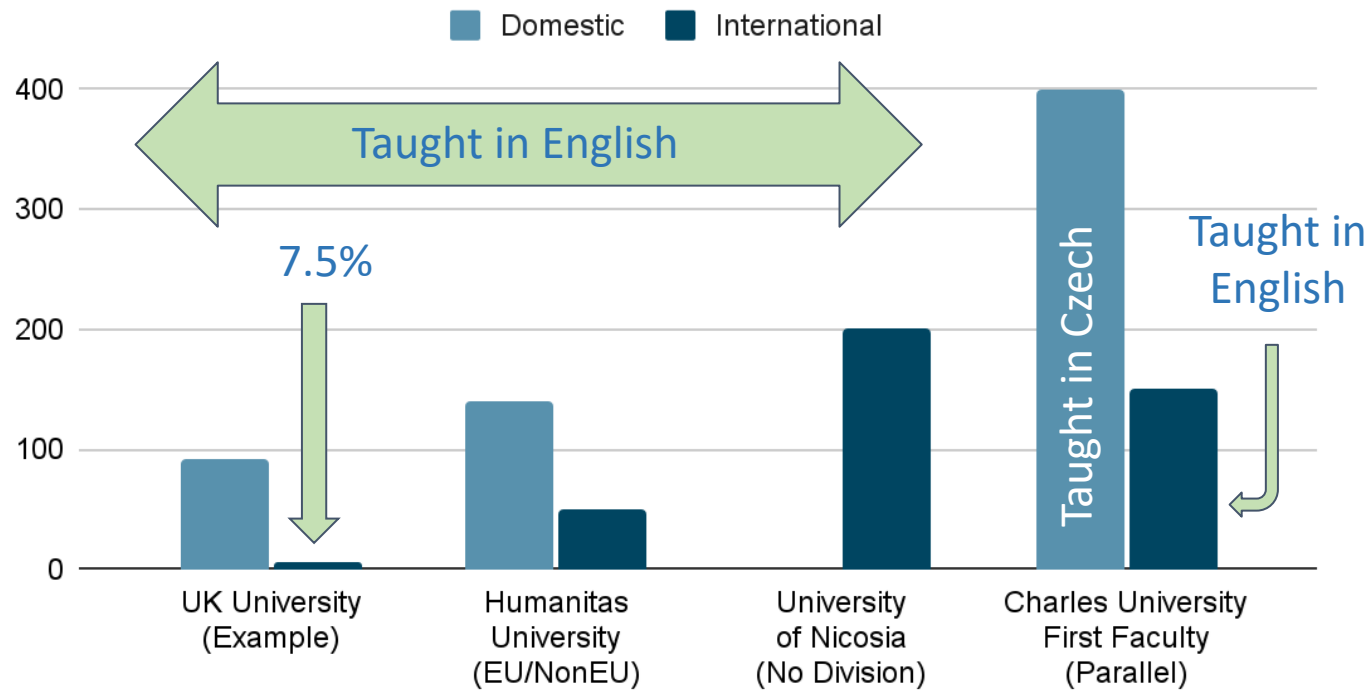
Important Considerations

1. Schengen Area
2. Expectations
 - Crime & personal safety
 - Validity/recognition of qualification
3. Mental wellbeing



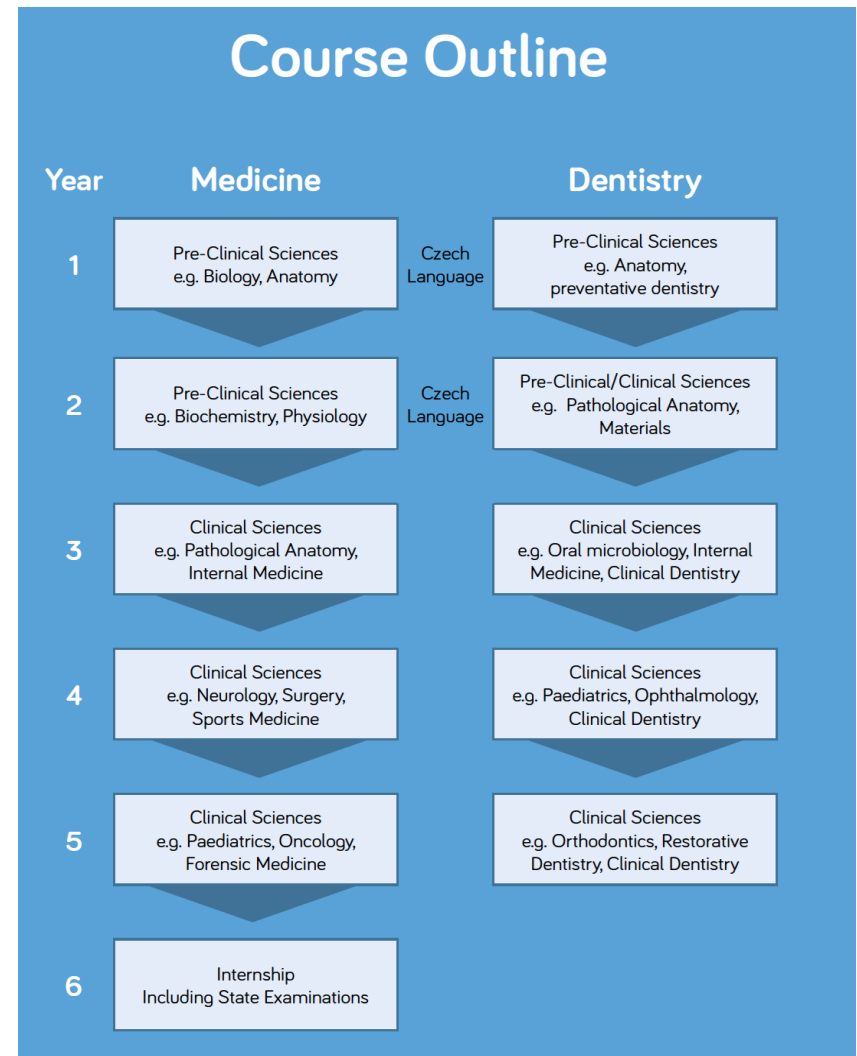
How do you fit in?

How are seats allocated?



Curriculum

- Traditional curriculum
 - Versus integrated
- Yrs 1-2: Pre-clinical Sciences
- Yrs 3-5: Clinical Sciences
- Yr 6: Internship
 - Inc. state exams



Tuition Fees

Medical Doorway



€8000 - €13,000

€14,000 - €19,000

€20,000 - €25,000

Medical University Pleven
Ostrava University
Palacky University
Pavol Jozef Safarik
Rijeka University
Humanitas University (EU)
University of Veterinary Medicine

Charles University Hradec Kralove
Charles University Second Faculty
Charles University Third Faculty
Masaryk University
University of Debrecen
University of Crete
Poznan University of Medical Science
Bialystok University
Riga Stradins University
Humanitas University (EU)

University of Nicosia
Charles University First Faculty
Humanitas University (Non-EU)

QMUL Malta = €37,500
(UK MBBS)



FAFSA Loan Approved



Partial Scholarship Opportunities

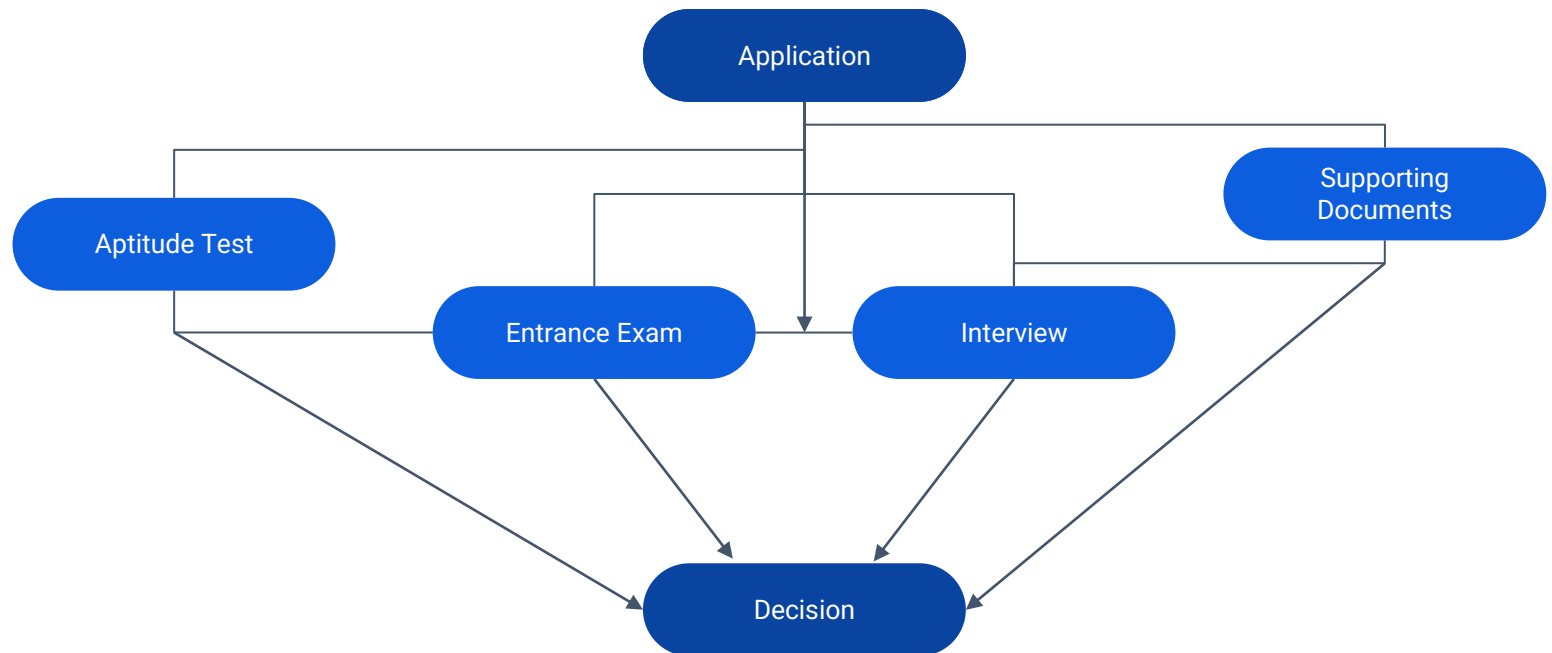


Accreditation

Where do you plan on commencing your career?

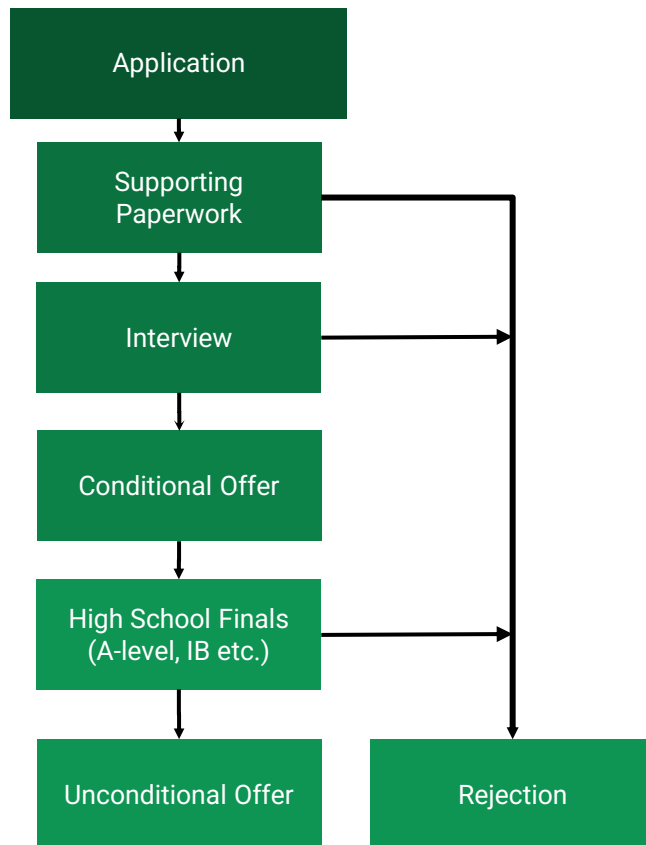
- **United States**
 - USMLE
 - Can take up three years to progress through the steps
 - California operates a list of recognised programmes in addition to USMLE
- **United Kingdom**
 - MLA exams from 2024
- **Canada**
 - MCCQE
 - Two exams

Application to enrolment

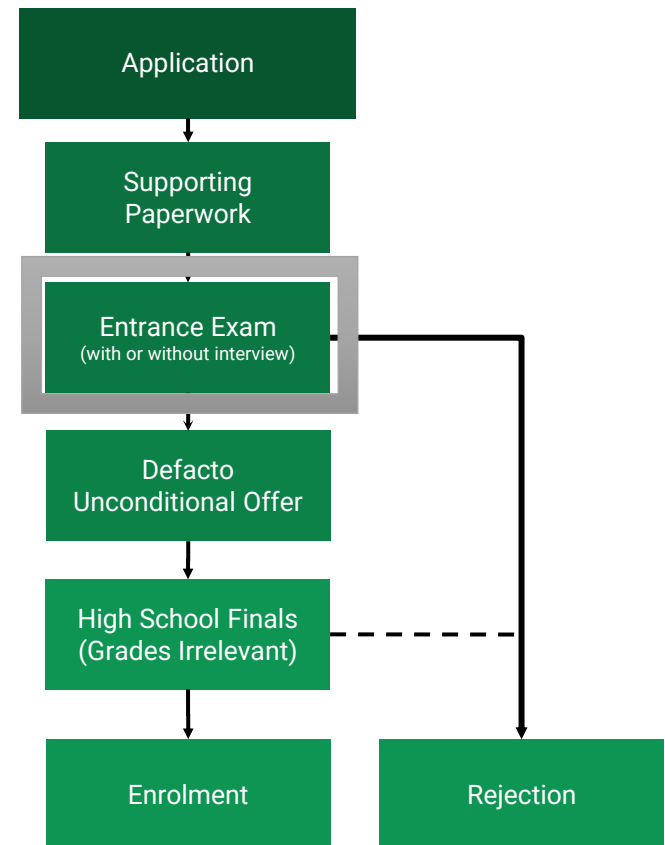


How to get selected - Interview Based v Exam Based

Mediterranean (Similar to UK)



Continental Europe



Entrance Exam Medical Doorway Strategies

Ranking Exams

- Humanitas University
 - HUMAT (Online)
 - Logical reasoning
- February/March
 - Can be taken twice
- Ranking in April
 - 150 EU
 - 50 Non-EU
- 1-2 week deadline to accept
 - Deposit payment
- Ranking continues

Shortlisting Exams

- Charles University First Faculty
 - In-person
 - Held in key regions
 - Scientific knowledge
- Progression to Interview
- Interview
 - Determine admission
- Offer within days

Predetermined Exams

- Palacky University
 - In-person/Online
 - Held in key regions
 - Scientific knowledge
- With or without interview
 - Passing mark is determined in advance
- Offer often made on the day

Prior Proper Planning Prevents Poor Performance

**Some
Universities**

Medical  Doorway



Medical Doorway



University of Nicosia
Cyprus



Masaryk University
Czech Republic



Charles University First Faculty of
Medicine
Czech Republic



Charles University Second Faculty
of Medicine
Czech Republic



Charles University Third Faculty of
Medicine
Czech Republic



Medical University Pleven
Bulgaria



Palacký University
Olomouc



University of Ostrava
Czech Republic



Charles University in Hradec
Kralove
Czech Republic



Poznan University of Medical
Sciences
Poland



Queen Mary University of London –
Malta
Malta



Riga Stradins University
Latvia



Debrecen University
Hungary

Brunel University in London (UK)

Medical  Doorway

- Open to international students
- £49,395 a year
- Scholarships available
- AAA or 36 Points
- Outside of UCAS



Queen Mary University of London (Malta)

Medical  Doorway

- UK Degree in the Mediterranean
- Open to all applicants
- €37,500 a year
- Intercalate in London
- AAA or 37 Points
- Outside of UCAS



Queen Mary University
Malta



St George's University (Grenada)

Medical  Doorway



St. George's
University

THINK BEYOND

Grenada, West Indies

Doctor of Medicine Program Outline

PRECLINICAL

MD PROGRAM

7-Year MD
Program Start

6-Year MD
Program Start

5-Year MD
Program Start

4-Year MD
Program Start



Preclinical
Sciences I

Preclinical
Sciences II

Preclinical
Sciences III

Basic Medical
Sciences I

Basic Medical
Sciences II

Clinical
Sciences I

Clinical
Sciences II



Students in the SGU/NU 5-year program will spend 1 year in preclinical, 1 year in basic sciences and may do 6 months of clinical rotations in the UK. Students in the SGU/NU 4-year program will spend 1 year in basic sciences and up to one year in the UK. Clinical rotations may not be done in the UK for the last six months of year four/five.

University of Nicosia (Cyprus)

Medical Doorway



- World-class facilities
- Open to all applicants
- €22,000
- Placements in the UK and USA
- ABB or 32 points
- Scholarship of up to 20%
- Flexible fee payments



Humanitas University (Italy)

Medical  Doorway

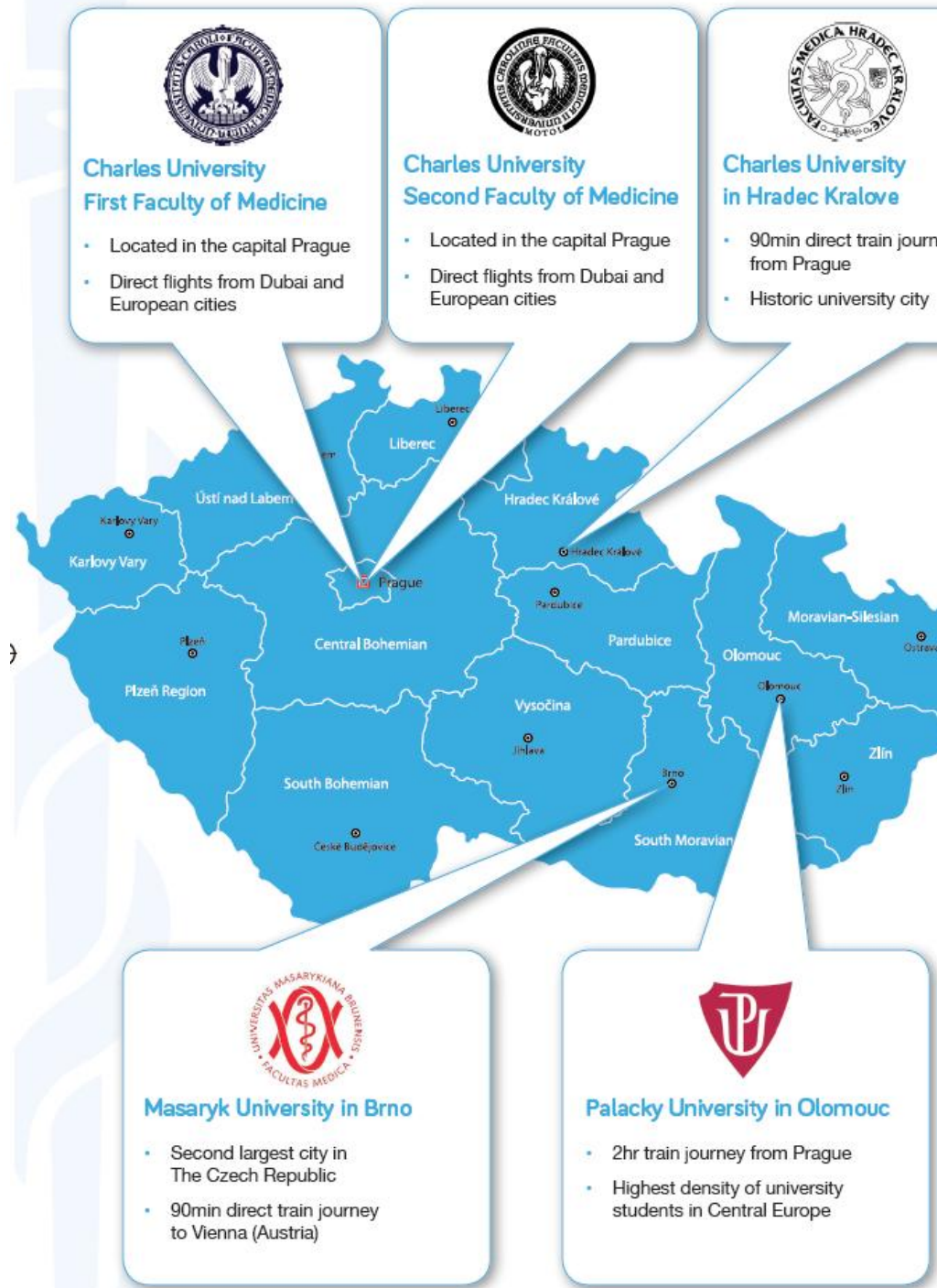


- Situated in Milan
- Exceptional facilities
- Campus environment
 - On-site hospital
 - EU fees from €10,156
 - Depends on family income
- Medicine & Surgery
- Medtec
 - Medicine with engineering
- Online entrance exams



Czech Republic

- Central European Country
 - Germany to the North
 - Austria to the South
- 8th safest country in the world
 - Singapore = 7th
 - Ireland = 12th
 - UK = 42nd(Global Peace Index 2020)
- Member of the European Union
- Schengen Passport Free Area
- 12 UNESCO Heritage Sites
- Population of 10.5m



Entrance Exams

- London
 - Hong Kong
 - UAE
 - Berlin
 - Toronto
-
- Multiple choice
 - Biology
 - Chemistry
 - Maths/Physics
 - Interviews



Charles University in Prague Medical Doorway

1st Faculty of Medicine (Czech Republic)

- World's 10th oldest medical schools
- Californian accreditation
- US Federal Loan Approved
- Mapping curriculum to USMLE
- Centre of Prague
- €24,250 per year (6 yrs)



Charles University in Prague
2nd Faculty of Medicine
(Czech Republic)

Medical  Doorway



2. LF UK

- Based at Motol Hospital Prague
- Medicine
 - €17,000 per year (6 yrs)
 - \$18,000
- Exam in London, Dubai, Berlin



Palacky University (Czech Republic)

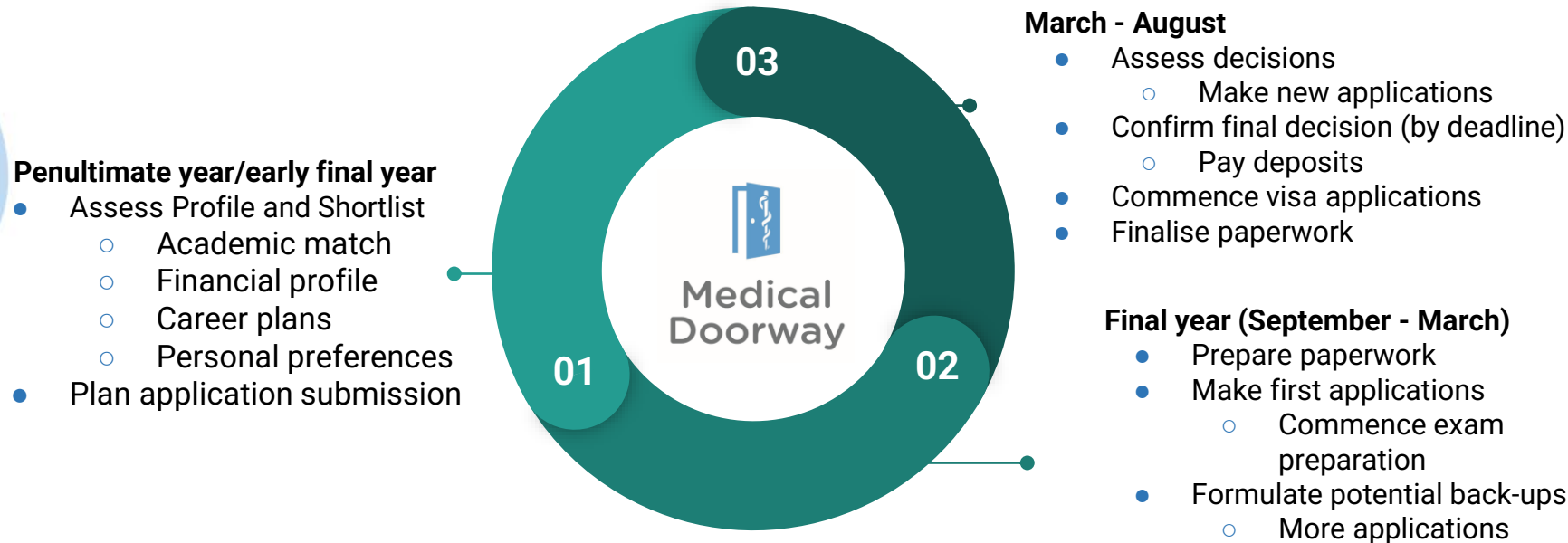
Medical  Doorway

- 2nd oldest Czech medical school
- Olomouc (2hrs from Prague)
 - Population est. 120,000
- Medicine
 - €12,500 per year (6 yrs)
- Dentistry
 - €14,000 per year (5 yrs)



Final years at high school

Steps to success



Diversity = Opportunity
It is never too early or too late to start

Medical Doorway

**Becoming an international
Medical Student**

What to do if I get accepted?

Medical  Doorway

- **Possibility of early visit**
 - Easy to do
 - Medical Doorway can help arrange visits
- **Accommodation booking**
 - Medical Doorway can help in many regions
 - Universities may have options
 - Not always however
- **Health Insurance**
 - Required for Visa-Application



In Summary

Medical Doorway

- Academic
 - Fit of selection strategy to academic profile
- Personal
 - Location
 - Q = “Why do you want to study in...” A = “I don’t know”
 - Strength in Exam V Interviews
- Financial
 - Overall v Cash flow
 - Scholarships
 - Living expenses
- Career planning
 - Recognition
 - Alignment to licensing exams (USLME)
 - Brand awareness



Medical Doorway



When is the
deadline to
apply to this
medical school?

Do not ask Ben this
question!



When should
I start
making the
application to this
medical school?

Now you have my
attention!

Dr Aaron

Medical |  Doorway



Become a
Medical Student

Medical  Doorway



Become a Medical Doorway Medical Student



OPEN DAYS

Medical  Doorway



Get Into Medicine UK - A Medical Doorway Open Day
Saturday 29th November 2025
The Royal Society of Medicine - London



**Medical
Doorway**



**For more
information**

Medical  Doorway

www.medicaldoorway.com

ben@medicaldoorway.com
hello@medicaldoorway.com

www.facebook.com/MedicalDoorway/

<https://www.youtube.com/c/Medicaldoorway/>

+44(0)1782-898151

WhatsApp: +447398765159

**Medical Doorway
Queens Gardens Business Centre
31 Ironmarket
Newcastle-under-Lyme
Staffordshire
ST5 1RP**